

Synergize Process Server (SPS)

A Total Solution for
Cost-Effective Business
Process Automation



Synergize Process Server (SPS) brings value to your organization with cost-effective business process automation, delivers faster process change, reduces development costs and improves efficiency.

Synergize Process Server (SPS)

Organizations rely on complex daily processes to keep them operating smoothly. Whether the process is complex or simple, there are essentially two challenges: ensuring that the process is performed consistently and according to corporate best practices, and secondly, ensuring the process is done both efficiently and cost effectively.

Business processes that involve many manual tasks are difficult to manage and are susceptible to inefficiencies. For example, when an employee updates one screen, another screen also needs to be manually updated to ensure customers are provided with timely information. Each of these processes has a significant cost to the organization since if the first screen is not updated, the second update will not occur, resulting in a series of cascading issues.

Synergize Process Server (SPS) is an easy to use tool, that will cost effectively automate your business processes, provide integration across your business systems and allow your organization to rapidly and easily adapt to change.

SPS makes it possible for business analysts and developers to quickly and reliably, create, deploy, maintain and enhance processes that address real world business needs instead of exhausting themselves and their budgets trying to create custom code and maintain many piecemeal programs to address these needs.

Let's look at a simple hypothetical business requirement and three scenarios: each time a daily delivery is made, a copy of the delivery receipt must be sent to the customers' accounting department for payment.

Scenario A - Manual Approach

When the signed daily paperwork arrives at the office, the person responsible will look up the customer email address, scan the document, and email a copy to the appropriate accounting department. However, due to human error, it is very easy to misplace documents or send them late, resulting in delayed payment and consequential costs.

Scenario B - IT builds a program to automate the process

A request is sent to the IT department to write a quick program to automate the manual process. Like every IT department, they are overloaded, so it takes several weeks to get the program ready. The program works well for the next six months until business needs change, which requires it to be retooled. Unfortunately, the person who wrote the original process automation program is no longer with the organization so the company must revert back to the manual process (see Scenario A above).

Scenario C - A better way with Synergize Process Server

SPS delivers this process faster, at a lower cost and in a manner that can be easily modified over time to keep pace with the ever-evolving needs of the organization.

Taking the same hypothetical business requirement outlined above, and implementing it using the SPS, the user would simply open the visual design tool, (*see Figure 1 below*), locate the various pre-built action items on the right from the library and drag-and-drop them onto the canvas in the required sequence. Once this process has been visually designed, it can be verified and set to run. The total time required to create this simple process should not exceed 30 minutes. (A more complex process will naturally require more time). Once running, the process is self managed and will continue to run reliably. When requirements change, the analyst can simply re-open the process server interface and make the necessary adjustments, enabling the process to be quickly reactivated.

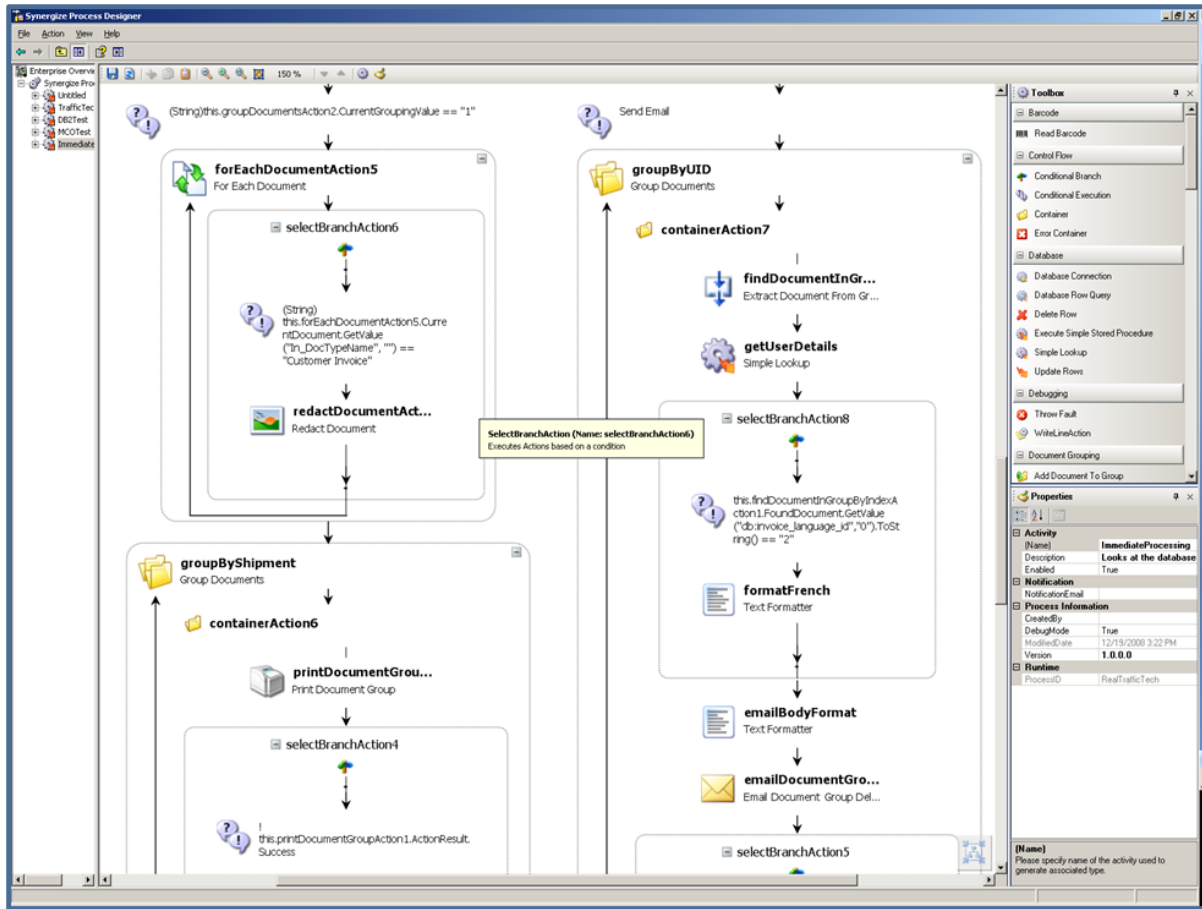


Figure 1

If the person who originally setup this particular process is no longer available, it is easy for any authorized personnel to make the necessary changes. They can quickly redeploy the updated process since the initial process was deployed:

- In a consistent way
- Using a consistent development logic
- Within and using the same toolset

SPS is best understood as a collection of Actions, *see Figure 2*, which are combined together to form a process. Actions are best described as discrete functions, for example, open file, read barcode, email document etc. The idea being that each action is complete in of itself, and has many parameters that are exposed and can be configured to ensure that the action accommodates the required functionality. Actions can therefore be upgraded and enhanced individually without affecting any other actions. The SPS ships with a rich library of standard actions to ensure every facet of a process can be configured.

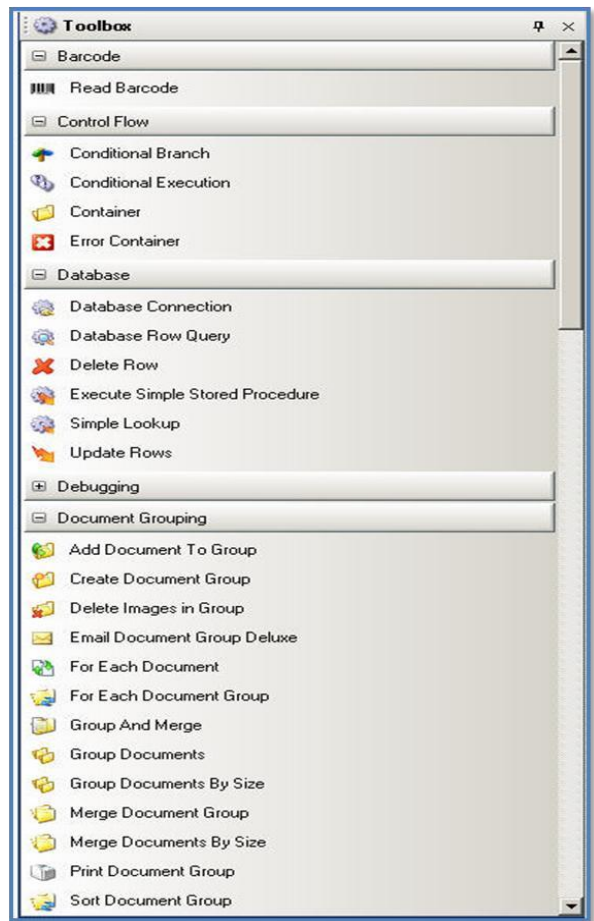


Figure 2

Benefits of Synergize Process Server (SPS)

- From requirement to process, implementation is measured in hours, not days or weeks.
- All processes are running in the same uniform manner from a central console, so any authorized person is able to monitor, start and stop processes.
- No need to monitor and manage many programs all over the network! Future changes can be implemented in hours and minutes versus days of reworking using traditional coding techniques.
- The organization gets near immediate results for minimal investment.

- SPS is an all-in-one solution. Included is a fully integrated, easy to use graphical process modeling designer, a solid and scalable execution engine, and monitoring tools.
- SPS is standards-based. Like all Synergize software offerings, Microdea sticks to Open Standards to protect your investment. This prevents vendor lock-in, and ensures that your data, documents and intellectual property is not held hostage.
- SPS is scalable. The included library of pre-built “Actions” are all based on Microsoft .Net Workflow foundation, meaning 3rd party developers can create additional custom actions, using tools such as Visual Studio. This ensures there is no limit to the type or complexity of a process that can be automated through the SPS.

Adaptability

With SPS, it is no longer necessary to rewrite or discard previously created processes, which is often the case with traditional custom programs. Simply take an existing process, rearrange the actions, add new ones as required and your process is altered to keep pace with the evolutionary demands of the organization. Like all Microdea products, SPS is designed to adapt to, and enhance your business processes, rather than forcing your business to operate according to the way the process was originally created.

A Total Solution

SPS is a total solution that cost-effectively provides business and process automation across your enterprise with excellent maintainability and a high degree of flexibility to ensure timely and complete process automation.

About Microdea

As developers of the innovative Synergize Document Automation Solution, Microdea provides clients with advanced document, workflow and process management technologies. This cost-effectively automates and streamlines their paper-intensive business processes. To learn more about Synergize Process Server (SPS) please contact us at 905.881.6071 ext. 244; or marketing@microdea.com